



SAFETY PUMPING SYSTEMS

NOTE -

Systems do not include a pump or inlet and outlet fittings (top and bottom on the 4 way valve)



3" VANE PUMP SYSTEM FOR REFINED PRODUCTS

PROTECTING THE ENVIRONMENT. IMPROVING DRIVER SAFETY.

NEVER
BLOW A
HOSE
AGAIN

PT's VANE PUMP SYSTEM brings a new level of safety for the environment and truck drivers. PT's 3" Vane Pump System is a high-performance truck mount four-way valve system for refined liquid products in the combustible and flammable categories. Products such as: diesel, gasoline, alcohol, avgas, biodiesel, fuel additives, synthetic oils. The Vane Pump System delivers where high performance is required, up to 240 GPM truck mounted, curb side. SPS100414





3 INCH VANE PUMP SYSTEM FOR REFINED PRODUCTS

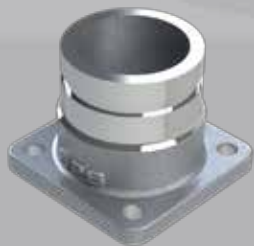


FEATURES AND BENEFITS

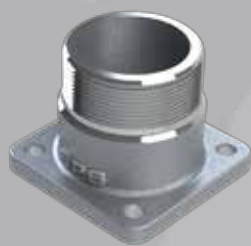
TRUCK MOUNTED FEATURE SET

- Never blow a hose again
- Neutral Position - no flow, no pressure
- 25" height X 25" width, 72lbs without pump
- Relief valve protection in both directions of flow
- Standardized, simple operating procedure - "Driver Friendly"
- Tactile feel of pumping process - never slug a line
- Designed for Blackmer TXD3E or equivalent
- Single relief valve pump, single direction PTO - less expensive
- One speed, one rotation, on/off only-pumps last longer, less maintenance
- Crossover options for dual side transloading
- 0 to 240 GPM with fully reversible flow while pump runs in one direction
- No painting, no welding and no cutting
- Assembles with a wrench

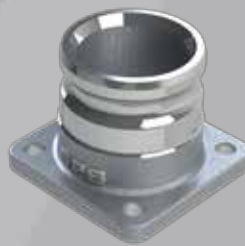
Additional Parts:



SPS100052



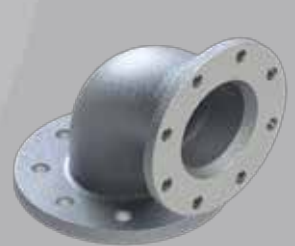
SPS100026



SPS100025



SPS100048



SPS100419

PT COUPLING COMPANY / CALL 800.654.0320 / EMAIL: INFO@PTCOUPLING.COM / www.ptcoupling.com



Follow us on Twitter: [ptcouplingusa](https://twitter.com/ptcouplingusa)



Like us on Facebook: [ptcoupling](https://www.facebook.com/ptcoupling)

PT COUPLING IS
ISO9001 CERTIFIED





SAFETY PUMPING SYSTEMS

NOTE -

Systems do not include a pump or inlet and outlet fittings (top and bottom on the 4 way valve)



4" GEAR PUMP SYSTEM FOR CRUDE OIL TRACTORS

PROTECTING THE ENVIRONMENT. IMPROVING DRIVER SAFETY.

NEVER
BLOW A
HOSE
AGAIN

PT's 4" TRUCK MOUNT GEAR PUMP SYSTEM

is a safe and cost-effective alternative for transferring highly viscous and combustible media: crude oil, frac fluid, asphalts, and tars. PT's 4" Gear Pump System is a four-way valve system rated up to 400 GPM; can be shaft or hydraulically driven; and either driver's, curbside, or truck mounted. Item SPS100415





4 INCH GEAR PUMP SYSTEM FOR CRUDE OIL TRACTORS

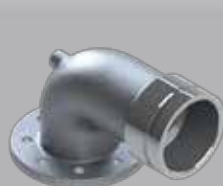


FEATURES AND BENEFITS

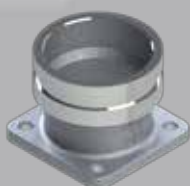
TRUCK MOUNTED FEATURE SET

- Never blow a hose again
- Neutral position - no flow, no pressure
- 28" height X 22" width, 75lbs without pump
- Relief valve protection in both directions of flow
- Standardized, simple operating procedure - "Driver Friendly"
- Tactile feel of pumping process - never slug a line
- Designed for Roper 3648 or equivalent
- Single relief valve pump, single direction PTO - less expensive
- One speed, one rotation, on/off only-pumps last longer, less maintenance
- Crossover options for dual side transloading
- 0 to 400 GPM with fully reversible flow while pump runs in one direction
- No painting, no welding and no cutting
- Assembles with a wrench

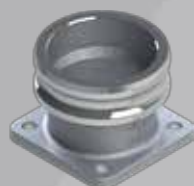
Additional Parts:



SPS100420



SPS100416



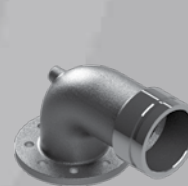
SPS100417



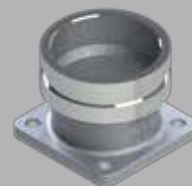
SPS100385



SPS100386



SPS100361



SPS100418

PT COUPLING COMPANY / CALL 800.654.0320 / EMAIL: INFO@PTCOUPLING.COM / www.ptcoupling.com



Follow us on Twitter: [ptcouplingusa](https://twitter.com/ptcouplingusa)



Like us on Facebook: [ptcoupling](https://www.facebook.com/ptcoupling)

PT COUPLING IS
ISO9001 CERTIFIED





SAFETY PUMPING SYSTEMS

NOTE -

Systems do not include a pump or inlet and outlet fittings (top and bottom on the 4 way valve)



4" GEAR PUMP SYSTEM FOR CRUDE OIL TRAILERS

PROTECTING THE ENVIRONMENT. IMPROVING DRIVER SAFETY.

NEVER
BLOW A
HOSE
AGAIN

PT's 4" TRAILER MOUNT GEAR PUMP SYSTEM

is a high performance four-way valve system for unrefined or highly viscous liquid products in combustible and flammable categories such as crude oil, frac fluids, asphalts, and tars. PT's 4" Gear Pump System is rated up to 400 GPM and can be shaft or hydraulically driven. System can be mounted on the trailer, either driver's side or curbside. Item SPS100456





4 INCH GEAR PUMP SYSTEM FOR CRUDE OIL TRAILERS



FEATURES AND BENEFITS

TRAILER MOUNTED FEATURE SET

- Never blow a hose again
- Neutral position – no flow, no pressure
- 25” height X 29” width, 67 lbs without pump
- Relief valve protection in both directions of flow
- Standardized, simple operating procedure – “Driver Friendly”
- Tactile feel of pumping process - never slug a line
- Designed for Roper 3648 or equivalent
- Single relief valve pump, single direction PTO – less expensive
- One speed, one rotation, on/off only-pumps last longer, less maintenance
- Crossover options for dual side transloading
- 0 to 400 GPM with fully reversible flow while pump runs in one direction
- No painting, no welding and no cutting
- Assembles with a wrench

Additional Parts:



SPS100420

SPS100416

SPS100417

SPS100385

SPS100386

SPS100361

SPS100418

PT COUPLING COMPANY / CALL 800.654.0320 / EMAIL: INFO@PTCOUPLING.COM / www.ptcoupling.com



Follow us on Twitter: [ptcouplingusa](https://twitter.com/ptcouplingusa)



Like us on Facebook: [ptcoupling](https://www.facebook.com/ptcoupling)

PT COUPLING IS ISO9001 CERTIFIED

